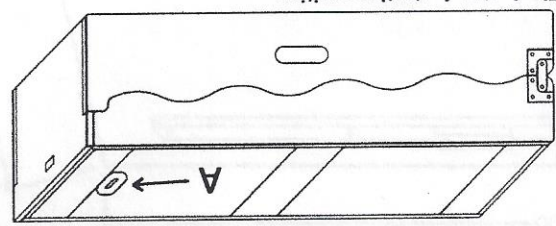


Snake Pit – Setup Instructions

Step 1:

Start with folded game laying on a flat surface, with the locking pin (A) facing up.



Step 2:

Pull down on the pin (A) and lift the top side using the handles on either side of the pin. Unfold until the game sides are at 90 degrees to each other and the straight hinge bracket (B) is parallel to the floor as shown in fig. 2. If having difficulties making straight hinge bracket (B) parallel, shake game slightly to allow hinge bracket (B) to fall into place.

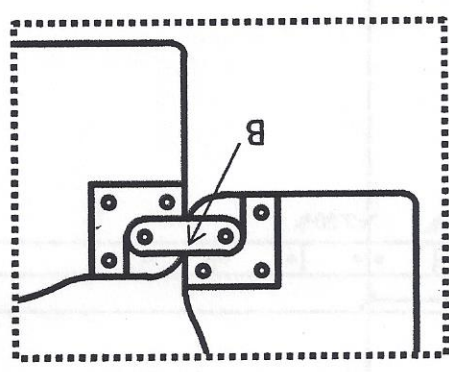


Fig. 2: step 2, hinge at 90 degrees

Step 3:

Unfold the game the rest of the way until both sides are resting on the floor or working surface. If done correctly, the playing surface on the side of the game with the steering arm should be below the playing surface of the taller side as shown in fig. 3.

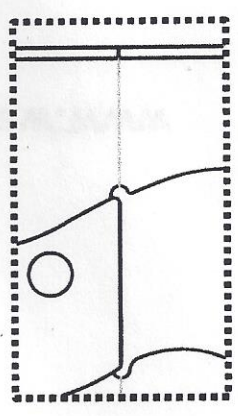
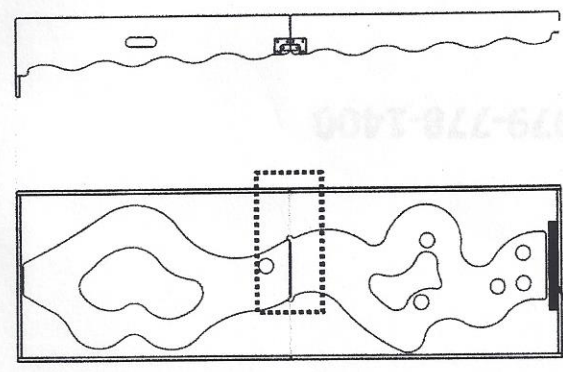


Fig. 3: step 3 position of game board



Steering Arm